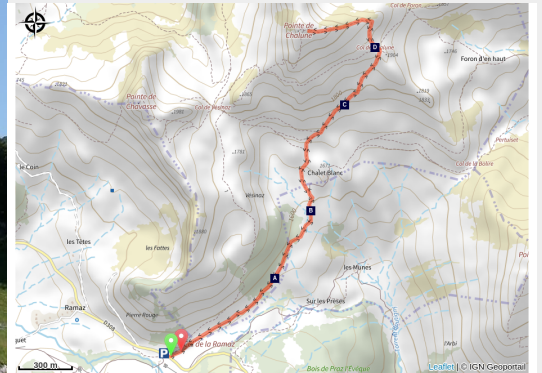


The Pointe de Chalune

CC des Montagnes du Giffre - Mieussy



Magnificent panoramic 360 degrees views over the Léman au Mont-Blanc.

Rich in ornithological anecdotes, this trail will also point you in the right direction and teach you proper conduct while out and about in the mountain pastures. This walk is our favourite in the entire region!

Useful information

Practice : Summer hike

Duration : 3 h

Length : 5.9 km

Trek ascent : 559 m

Difficulty : Medium

Type : Aller-retour

Themes : Flora, Pastoralism, Ecogeste, Point de vue

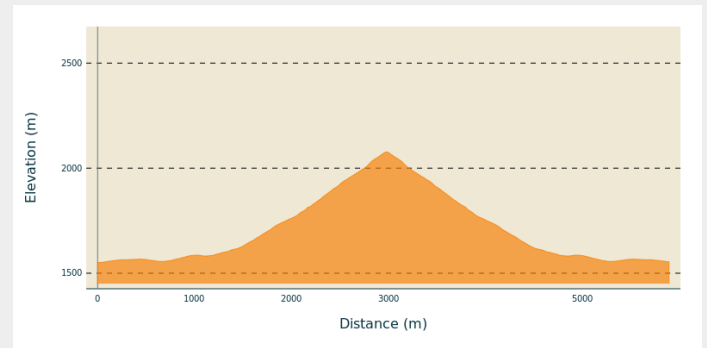
Trek

Departure : Pierre Rouge parking area, Sommand

Arrival : Pierre Rouge parking area, Sommand

Cities : 1. Mieussy
2. Bellevaux

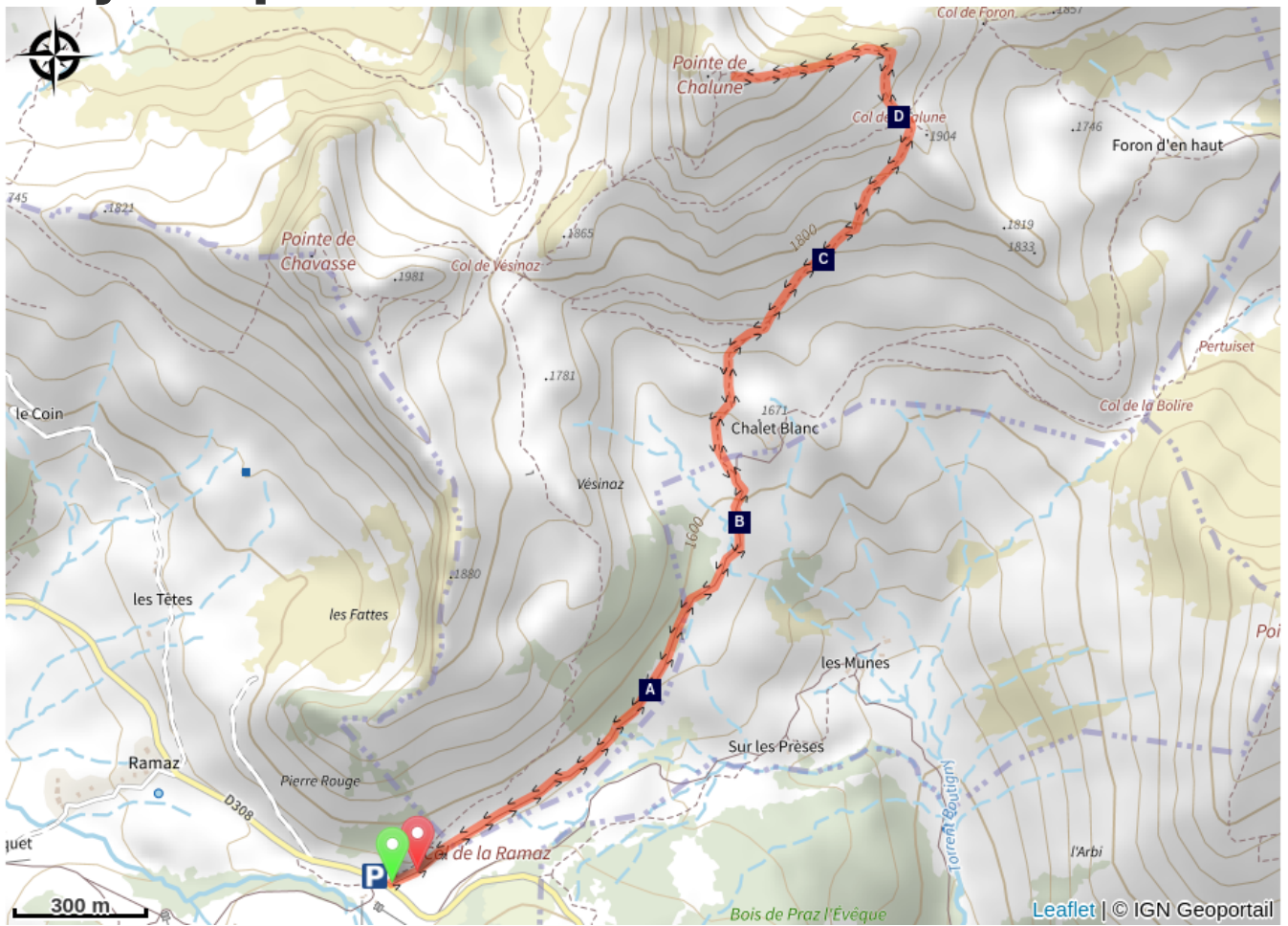
Altimetric profile







Min elevation 1550 m Max elevation 2079 m

From the parking area in front of the Pierre Rouge ski lift, take the vehicular road towards the Chalet Blanc, in the heart of the mountain pastures. (Don't forget to close the gates securingly). This wide trail will offer you a beautiful view of the Pointe de la Chalune, Chavasse and, above all, of Mont Blanc. Once you've arrived at the Chalet Blanc, turn right along a mountainside path towards the Col de Chalune (there are no directional signs, so please stay on the trail). Once you've reached the Col de Chalune, you will enjoy the view of the Roc d'Enfer. The steep, exposed path to the summit (2116m) takes an average of 30-45 minutes of walk. Return by the same way.

On your path...



-  Dogs in natural areas (A)
-  The Golden Eagle (C)

-  Herd guard dogs, or “Patous” (B)
-  A mountain to share: Natura 2000 area (D)

All useful information

Animaux non acceptés

Les chiens sont interdits en cœur des parcs nationaux et dans la plupart des réserves naturelles. La divagation des chiens a un impact et des conséquences lourdes pour la faune sauvage et les troupeaux. Les chiens perturbent la biodiversité par leur odeur, leur présence et l'impact de leurs déjections. Ils peuvent transmettre des germes, stresser la faune sauvage ou encore détruire des couvées au sol.



Présence probable de chien de protection

Lors d'une traversée d'alpage, vous allez rencontrer des chiens de protections des troupeaux (patous): 1- Signalez-vous pour ne pas surprendre le chien (« salut le chien !») 2- Dans la mesure du possible, contournez largement le troupeau sans vous mettre en danger. 3- Si le chien approche, arrêtez-vous ou avancez doucement (mais pas vers le chien directement), ne le fixez pas dans les yeux et parlez-lui calmement. Pour vous identifier, le chien peut avoir besoin de s'approcher pour vous sentir. Pour lui, la vitesse de déplacement est perçue comme une menace. Le chien de protection finira par rejoindre son troupeau Avec les bâtons de marche : prenez-les dans une main et orientez-les vers le bas. Surtout ne les brandissez pas.

Advices

Exposed vertiginous path leading to the summit! Dogs are not allowed even on a leash! Always be careful and plan ahead when hiking. Asters, CEN 74 can not be held responsible for the occurrence of any accident or incident on this trail.

How to come ?

Transports

Bus L3 Mieussy [Bus L3 Mieussy](#)

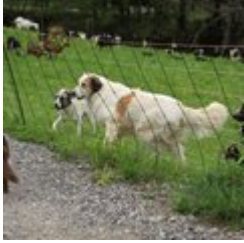
Access

The Col de la Ramaz is a pass between the Sommand plateau and Praz-de-Lys. You can reach it from Mieussy or Tanninges, heading towards the Les Gets bridge ("pont des Gets").

Advised parking

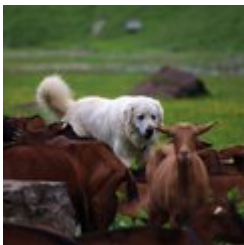
Pierre Rouge parking area, Sommand

On your path...



Dogs in natural areas (A)

Naturally, we'd love to see our dogs roaming freely in the wild. However, the impact of this unrestrained roaming has an adverse impact on wildlife. Their presence and their smell all negatively impact the environment. In Haute-Savoie, dogs are prohibited in nature reserves, except in the Contamines-Montjoie and Roc de Chère nature reserves on Lake Annecy, where they may accompany you as long as they are kept on a leash. The guard dogs present in the mountain pastures to protect the herds may perceive your dog as a threat. To avoid any awkward situations, please do not bring your dog onto the mountain pastures.



Herd guard dogs, or “Patous” (B)

The role of herd guard dogs (often known as patous, the name of the breed) is to protect herds from predators (wolves, lynx, dogs, etc.), day and night, on mountain pastures or closer to villages. They are often used in large numbers, particularly to deal with packs of wolves. HOW DOGS BEHAVE: 1. They sprint and approach to identify any threat. 2. They bark to warn and dissuade. BEHAVIOUR YOU SHOULD ADOPT WHEN MEETING A DOG: 1. Go around the herd without running, staying as far from it as possible 2. Signal to the dog by speaking calmly so as not to startle the dog. If the dog approaches, stop, do not stare into its eyes, hide your walking sticks (any aggression will amplify the aggressive behaviour of these dogs). Remember, these dogs are not trained to attack on sight but rather to deter.

Attribution : @FJeanparis



The Golden Eagle (C)

It's a predator, armed for the hunt! Thanks to its large, wide wings, it glides high into the sky in search of prey. Its exceptional eyesight spots marmots (its favourite meal), hares, foxes or ptarmigan, and sometimes even young chamois or ibex! Its prominent eyebrow arch acts as a sun shield when it swoops down to snatch its prey. It is equipped with talons for grabbing and a powerful, hooked sharp beak for tearing flesh.



🏞️ A mountain to share: Natura 2000 area (D)

The Roc d'Enfer area has been classified as a wildlife reserve since 1958 and a Natura 2000 area since 2006. The aim of Natura 2000 is to bring together and balance human activities and the protection of biodiversity. Like here, on this very site, where iconic species such as the Eurasian pygmy owl and rare species of flora like the famous *Cypripedium calceolus* (lady's slipper orchid) can be found. Let's enjoy the mountain flowers without picking them, let's walk on the signposted trails and avoid trampling the natural environment around us, let's close the gates to the pastures to respect the work of the shepherds. Nature is our common home, a living space for wildlife and biodiversity as well as a working space. Every gesture counts, no matter how small, so spread the word to your neighbour!

Attribution : @Pauline-et-ses-crayons